

Position of Entry/Exit gates of terminal with respect to drop-off zones and reserved parking	Level Difference (in mm)	Design Element to be used	Section to be referred for detail
Same floor	0 - 150	Kerb Ramp	Section 13
Different Floors	Above 150	Ramp with Railings	Section 13
	-	Accessible lift	Section 12

Table 2: Design elements to be used for difference in floor levels

Total number of car parking spaces in the parking lot	Required number of reserved parking spaces for PWD
1-50	1
51-150	2
151-250	3
251-350	4
351-450	5
451 and above	6

Table 1: Number of reserved car parking spaces in parking lot

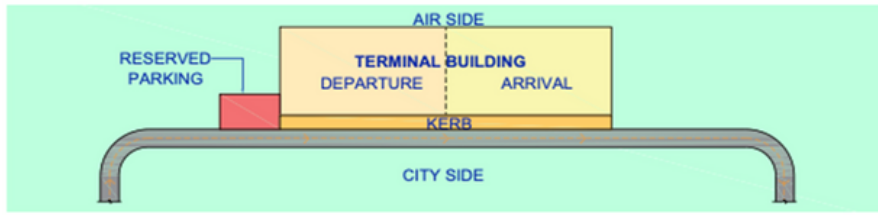


Figure 1: Schematic diagram showing the preferred location of reserved parking for persons with disability near terminal building



Figure 4: Example of parking symbol on floor and transfer bay marking

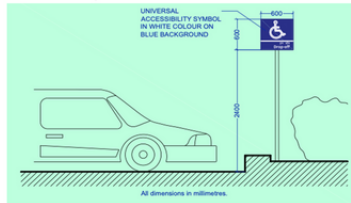


Figure 5: Vertical sign at City side kerb for accessible drop-off point

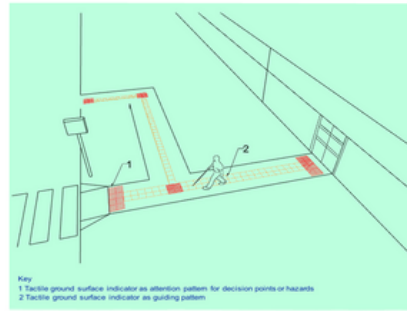


Figure 9: Example of tactile ground surface indicators used in open area (Source: NBC, 2016)

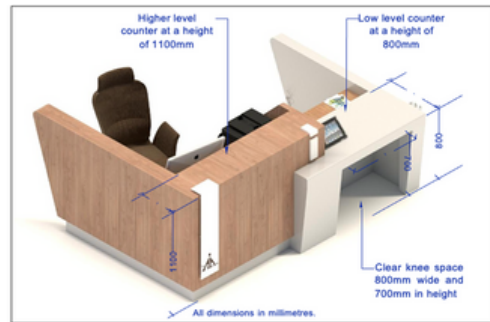


Figure 11: Necessary space under counter or stand for ease of wheelchair users

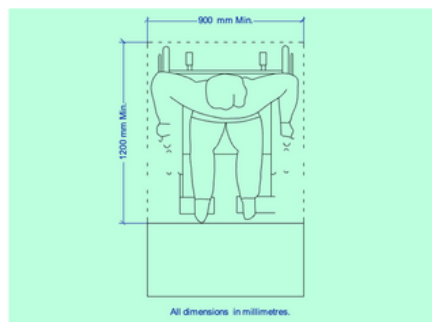


Figure 12: Unobstructed space required in front of the counter (Source: NBC, 2016)

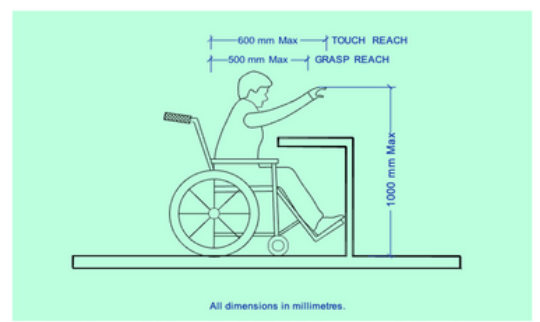


Figure 13: Maximum reach to be considered while designing counters, etc. (Source: NBC, 2016)



Figure 14: Large Tactile Floor Plan at one of the entrances to the terminal building at Ciampino Airport in Rome, Italy (Source: <https://cjqwahh.ie/2012/11/>)

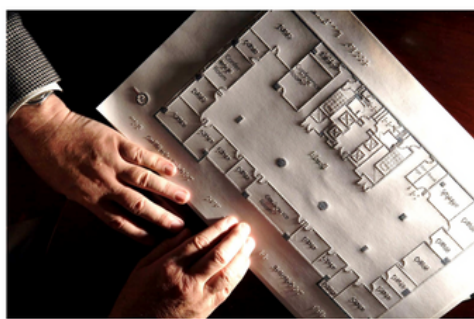


Figure 15: Example of tactile map of building to be displayed near the reception desk (Source: https://1.bp.blogspot.com/-QVtUXmSOPMc/Vbeip_2myI/AAAAAAAAAHKE/TCouHcBIAk/s1600/tactile_map.jpg)

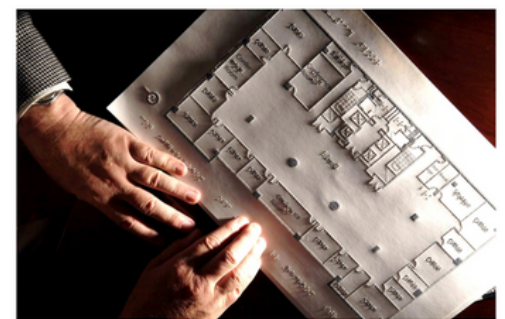


Figure 15: Example of tactile map of building to be displayed near the reception desk (Source: https://1.bp.blogspot.com/-QVtUXmSOPMc/Vbeip_2myI/AAAAAAAAAHKE/TCouHcBIAk/s1600/tactile_map.jpg)

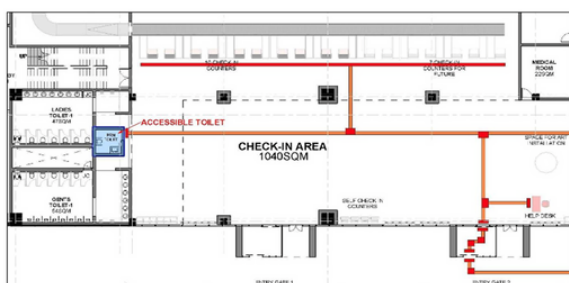


Figure 18: Example of warning tiles in front of check-in counters in small airports

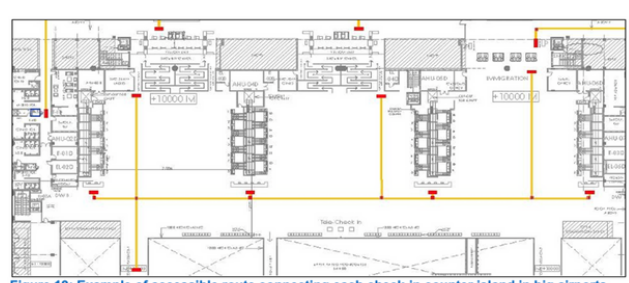


Figure 19: Example of accessible route connecting each check-in counter island in big airports

